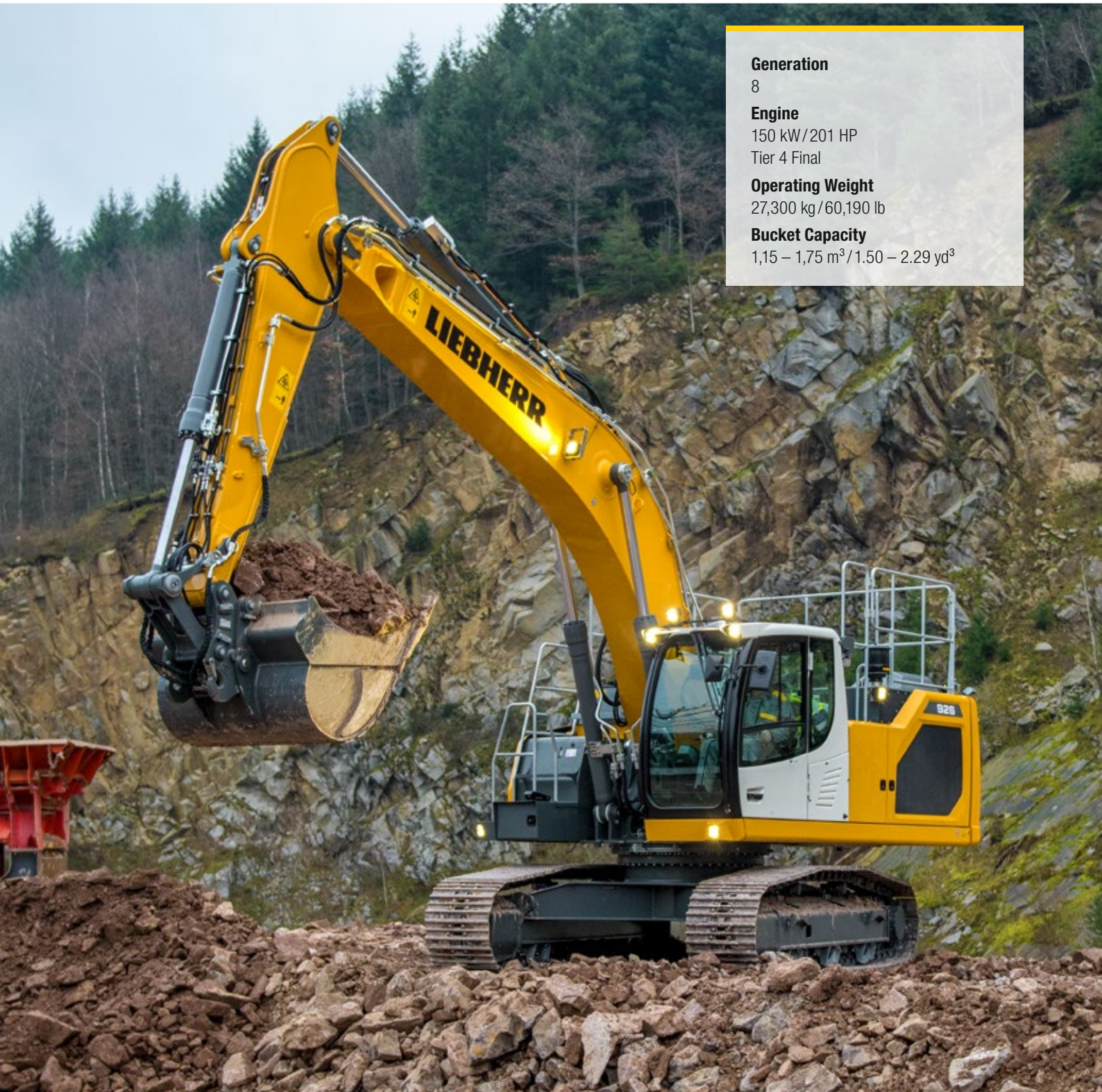


Product Information: Crawler Excavator

R 926

Litronic®



Generation

8

Engine

150 kW/201 HP

Tier 4 Final

Operating Weight

27,300 kg/60,190 lb

Bucket Capacity

1,15 – 1,75 m³ / 1.50 – 2.29 yd³

LIEBHERR

Experience the Progress

R 926

Safety

- Panoramic visibility with no obstructions and camera on the rear and the right side for enhanced safety
- Tilttable console for easy and safe access to cab
- ROPS-certified cab structure
- Emergency exit via the rear cab window
- Right window and windshield in laminated and tinted glass

Equipment

- Large choice of types and lengths of equipment
- Safety check valves for hoist and stick cylinders (option)
- Longer lifespan of components and higher productivity thanks to automatic centralised lubrication system

Maintenance

- Innovative servicing concept, with service points accessible from ground level
- Engine oil, hydraulic oil, fuel and urea (diesel exhaust fluid) levels visible on the display
- New concept for lateral access to uppercarriage and large maintenance platform





Comfort

- Spacious, air-conditioned work space
- Airsprung seat with vertical and longitudinal suspension
- Easy-to-use high resolution 7" colour touchscreen
- Completely retractable front cab window
- New LED lighting as standard

Engine

- New engine that conforms with the US EPA Tier 4 Final exhaust emissions standard
- Automatic engine speed increase/decrease controlled by proximity sensors in the joysticks

Undercarriage

- Robust, reliable X-frame undercarriage, easy to secure thanks to its integrated eyelets
- Easy maintenance
- Maintenance-free track chains and track rollers with lifetime lubrication
- Extra storage (option)

Technical Data



Engine

Rating	per SAE J1349 201 HP (150 kW) at 1,800 rpm
	per ISO 9249 204 HP (150 kW) at 1,800 rpm
Torque	1,245 Nm at 1,100 rpm / 918 lbf ft at 1,100 rpm
Model	Liebherr D934 A7-25
Type	4 cylinder in-line
Bore	122 mm / 4.8 in
Stroke	150 mm / 5.9 in
Displacement	7.0 l / 427 in³
Engine operation	4-stroke diesel Common-Rail Turbo-charged and after-cooler
Exhaust gas treatment	Tier 4 Final SCR Filter Passive regeneration by thermo management
Cooling system	Water-cooled and oil cooler, after-cooled and fuel cooled
Air cleaner	Dry-type air cleaner with pre-cleaner
Fuel tank	620 l / 164 gal
Urea tank	90 l / 24 gal
Electrical system	
Voltage	24 V
Batteries	2 x 135 Ah/ 12 V
Alternator	Three-phase current 24 V/ 140 A
Engine idling	Sensor controlled



Hydraulic Controls

Power distribution	Via control valves, simultaneous and independent actuation of undercarriage, swing drive and equipment
Electric servo circuit	Electro-hydraulic control
Equipment and swing	Proportional via joystick levers
Travel	- Proportional control via foot pedals or removable levers - Automatic or manual speed adjustment
Additional functions	Proportional regulation via foot pedals or mini-joystick



Hydraulic System

Hydraulic system	Positive Control hydraulic system. Demand-based, double independent pump flows Features high system dynamics and sensitivity provided by integrated system controlling Independent circuit for rotation
Hydraulic pumps	
For equipment and travel drive	Liebherr, variable displacement, swashplate double pump
Max. flow	2 x 265 l/min. / 2 x 70 gpm
Max. pressure	380 bar / 5,511 psi
For swing drive	Swashplate pump, closed-loop circuit
Max. flow	200 l/min. / 53 gpm
Max. pressure	365 bar / 5,294 psi
Pump management	Electronic management synchronous to the control block
Hydraulic tank	239 l / 63 gal
Hydraulic system	max. 475 l / max. 126 gal
Hydraulic oil filter	1 main return filter with integrated partial micro filtration (10 µm / 1,250 mesh)
Cooling system	Compact cooler, consisting of a water cooler, with hydraulic oil cooler, gearbox oil cooler, fuel cooler and after-cooler cores and hydrostatically driven fan
MODE selection	Adjustment of engine and hydraulic performance via a mode pre-selector to match application, e.g. for especially economical and environmentally friendly operation or for maximum digging performance and heavy-duty jobs
Engine speed and performance setting	Stepless adjustment of engine output and hydraulic power via engine speed



Swing Drive

Drive	Liebherr swashplate motor with integrated brake valve and torque control
Transmission	Liebherr compact planetary reduction gears
Swing ring	Liebherr, sealed race ball bearing swing ring, internal teeth
Swing speed	0 – 10.1 rpm stepless
Swing torque	90 kNm / 66,381 lbf ft
Holding brake	Wet multi-disc (spring applied, pressure released)



Operator's Cab

Cab	ROPS safety cab structure (roll-over protection system according to ISO 12117-2:2008) with windscreen, totally or partially retractable (only upper part), under cab roof, LED work headlights integrated in the ceiling, a door with a sliding window (can be opened on both sides), large stowing box and several stowing possibilities, shock-absorbing suspension, laminated right hand side and roof windows, all windows tinted, separate extensible window shades for the sunroof window and windscreen, cigarette lighter and 24 V plug, 12 V plug, cup holder, mobile phone storage net
Operator's seat	Liebherr-Comfort seat, airsprung with automatic weight adjustment, vertical and longitudinal seat damping including consoles and joysticks. Seat and armrests adjustable separately and in combination (adjustable in width, height and inclination), seat heating as standard
Arm consoles	Oscillating consoles with seat, tiltable console left
Operation and displays	Large high-resolution operating unit, intuitive, color display with touchscreen, video-compatible, numerous setting, control and monitoring options, e.g. air conditioning control, fuel consumption, machine and attachment parameters
Air-conditioning	Automatic air-conditioning, recirculated air function, fast de-icing and demisting at the press of a button, air vents can be operated via a menu. Recirculated air and fresh air filters can be easily replaced and are accessible from the outside. Heating-cooling unit, designed for extreme outside temperatures, sensors for solar radiation, inside and outside temperatures
Noise emission	
ISO 6396	L_{pA} (inside cab) = 70 dB(A)
2000/14/EC	L_{WA} (surround noise) = 104 dB(A)



Undercarriage

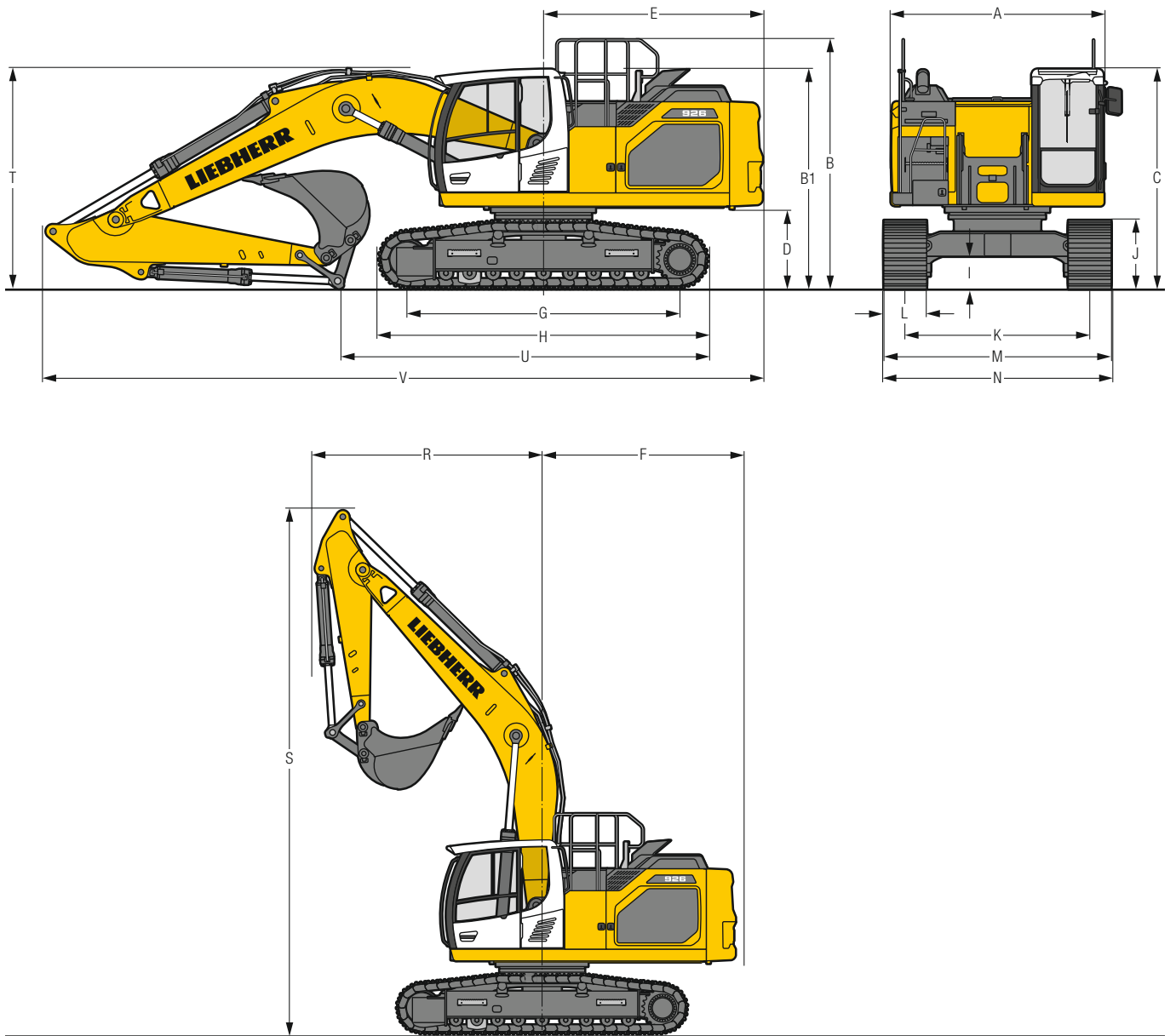
LC	Gauge 2,590 mm / 8'6"
Drive	Liebherr swashplate motor with brake valves on both sides
Transmission	Liebherr planetary reduction gear
Maximum travel speed	Low range 3.9 km/h / 2.4 mph High range 6.1 km/h / 3.8 mph
Drawbar pull on crawler	236 kN / 53,060 lbf
Track components	B60, D6C, maintenance-free
Track rollers / Carrier rollers	9/2
Tracks	Sealed and greased
Track pads	Triple grouser
Holding brake	Wet multi-disc (spring applied, pressure released)
Brake valves	Integrated into travel motor
Lashing eyes	Integrated



Equipment

Type	Combination of resistant steel plates and cast steel components
Hydraulic cylinders	Liebherr cylinders with seal and guidance systems
Bearings	Sealed, low maintenance
Lubrication	Liebherr central lubrication system
Hydraulic connections	Pipes and hoses equipped with SAE split-flange connections
Buckets	Standard equipped with Liebherr tooth system

Dimensions



		LC				mm/ft in	
A	Uppercarriage width					2,990**/ 9'10"***	
B	Uppercarriage height					3,075 /10' 1"	
B1	Uppercarriage height (handrails folded)					2,855 / 9' 4"	
C	Cab height					3,090 /10' 2"	
D	Counterweight ground clearance					1,115 / 3' 8"	
E	Rear-end length					3,075 /10' 1"	
F	Tail swing radius					3,200 /11' 6"	
G	Wheelbase					3,830 /12' 7"	
H	Undercarriage length					4,625 /15' 2"	
I	Undercarriage ground clearance					470 / 1' 7"	
J	Track height					965 / 3' 2"	
K	Track gauge					2,590 / 8' 6"	
L	Track pad width	600/ 24"	700 / 28"	800 / 31"	900 / 35"		
M	Width over tracks	3,190/10' 6"	3,290 /10'10"	3,390 /11' 1"	3,490 /11' 5"		
N	Width over steps	3,125/10' 3"	3,325*/10'11"	3,325*/10'11"*	3,425* /11' 3"*		

* width with removable steps

** without door stop device and spacer

		Stick length m/ft in	Mono boom 6.00 m/19'8" direct mounting mm/ft in
R	Front swing radius	2.50/ 8' 2"	3,650/12'
		3.00/ 9'10"	3,650/12'
		3.50/11' 6"	3,650/12'
S	Height with boom up	8,350/27' 5"	
T	Boom height	2.50/ 8' 2"	3,200/10' 6"
		3.00/ 9'10"	3,150/10' 4"
		3.50/11' 6"	3,150/10' 4"
U	Length on ground	2.50/ 8' 2"	6,050/19'10"
		3.00/ 9'10"	5,200/17' 1"
		3.50/11' 6"	4,700/15' 5"
V	Overall length	10,100/33' 2"	
	Bucket	1.55 m ³ /2.03 yd ³	

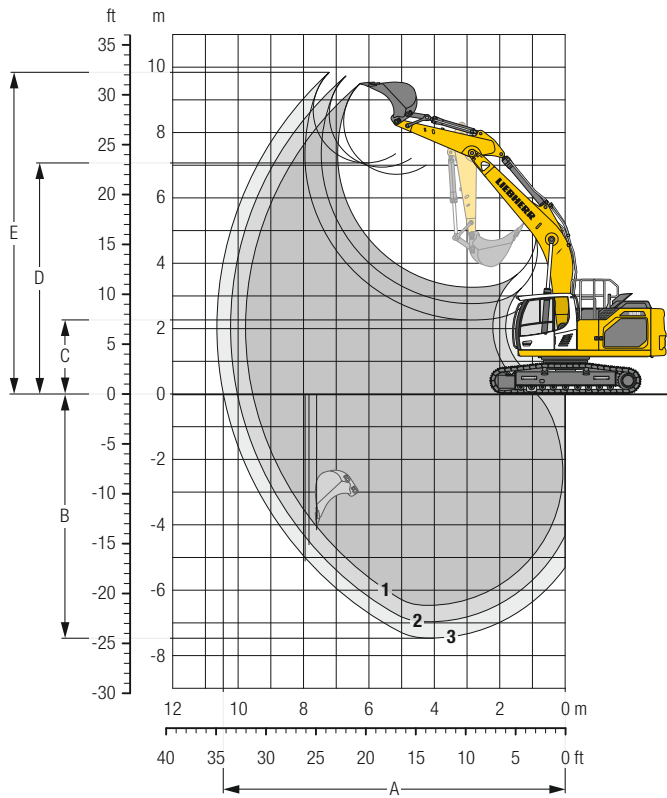
Transport Dimensions

removable elements disassembled

		Stick m/ft in	Mono boom 6.00 m/19'8" mm/ft in			
Pad width			600/ 24"	700/ 28"	800/ 31"	900/ 35"
Transport width			3,190/10' 6"	3,290/10'10"	3,390/11' 1"	3,490/11' 5"
Transport length			10,100/33'2"			
Transport height	2.50/ 8' 2"	3,200/10'6"				
	3.00/ 9'10"	3,150/10'4"				
	3.50/11' 6"	3,150/10'4"				
Bucket		1.55 m ³ /2.03 yd ³				

Backhoe Bucket

with Mono Boom 6.00 m / 19'8" and Counterweight 4.6 t / 10,140 lb



Digging Envelope

without quick coupler		1	2	3
Stick length	m / ft in	2.50 / 8'2"	3.00 / 9'10"	3.50 / 11'6"
A Max. reach at ground level	m / ft in	9.55 / 31'4"	10.02 / 32'10"	10.45 / 34'3"
B Max. digging depth	m / ft in	6.47 / 21'3"	6.97 / 22'10"	7.47 / 24'6"
C Min. dumping height	m / ft in	3.26 / 10'8"	2.76 / 9' 1"	2.26 / 7'5"
D Max. dumping height	m / ft in	6.72 / 22'1"	6.94 / 22' 9"	7.07 / 23'2"
E Max. cutting height	m / ft in	9.49 / 31'2"	9.72 / 31'11"	9.84 / 32'3"

Forces

without quick coupler		1	2	3
Stick digging force (ISO 6015)	kN / lbf	152 / 34,170	134 / 30,120	120 / 26,980
Bucket digging force (ISO 6015)	kN / lbf	187 / 42,040	187 / 42,040	187 / 42,040
Stick digging force (SAE J1179)	kN / lbf	145 / 32,600	129 / 29,000	116 / 26,080
Bucket digging force (SAE J1179)	kN / lbf	166 / 37,320	166 / 37,320	166 / 37,320

Operating Weight and Ground Pressure

The operating weight includes the basic machine with counterweight 4.6 t / 10,140 lb, mono boom 6.00 m / 19'8", stick 3.00 m / 9'10" and bucket 1.55 m³ / 2.03 yd³ (950 kg / 2,090 lb).

Undercarriage		LC			
Pad width	mm / in	600 / 24"	700 / 28"	800 / 31"	900 / 35"
Weight	kg / lb	26,450 / 58,310	26,750 / 58,970	27,000 / 59,530	27,300 / 60,190
Ground pressure	kg/cm ² / psi	0.54 / 7.7	0.47 / 6.7	0.42 / 6.0	0.37 / 5.3

Optional: counterweight 5.1 t / 11,240 lb

(counterweight 5.1 t / 11,240 lb increases the operating weight by 500 kg / 1,100 lb and ground pressure by 0.01 kg/cm² / 0.1 psi) see load tables on page 11

Buckets Machine stability per ISO 10567* (75% of tipping capacity)

	Cutting width mm in	Capacity ISO 7451 m ³ yd ³	Weight ¹⁾ kg lb	Weight ⁴⁾ kg lb	LC-Undercarriage (with track pads 800 mm/31")					
					Stick length (m/ft in)					
					without quick coupler		with quick coupler		with quick coupler	
	2.50 8'2"	3.00 9'10"	3.50 11'6"	2.50 8'2"	3.00 9'10"	3.50 11'6"				
with counterweight 4.6 t/10,140 lb										
STD ¹⁾	1,250	1.15	810	830	▲	▲	▲	▲	▲	▲
	49"	1.50	1,790	1,830	▲	▲	▲	▲	▲	▲
	1,250	1.25	890	910	▲	▲	▲	▲	▲	▲
	49"	1.63	1,960	2,010	▲	▲	▲	▲	▲	▲
	1,400	1.35	850	880	▲	▲	▲	▲	▲	▲
	55"	1.77	1,870	1,940	▲	▲	▲	▲	▲	▲
	1,500	1.45	910	910	▲	▲	▲	▲	▲	▲
	59"	1.90	2,010	2,010	▲	▲	▲	▲	▲	▲
	1,600	1.55	950	970	▲	▲	■	▲	▲	■
	63"	2.03	2,090	2,140	▲	▲	▲	▲	▲	▲
HD ²⁾	1,500	1.65	1,020	1,020	▲	■	▲	▲	■	▲
	59"	2.16	2,250	2,250	▲	▲	▲	▲	▲	▲
	1,600	1.75	1,060	1,080	▲	■	▲	▲	▲	■
	63"	2.29	2,340	2,380	▲	▲	▲	▲	▲	▲
	1,250	1.15	910	940	▲	▲	▲	▲	▲	▲
	49"	1.50	2,010	2,070	▲	▲	▲	▲	▲	▲
	1,250	1.25	1,010	1,030	▲	▲	▲	▲	▲	▲
	49"	1.63	2,230	2,270	▲	▲	▲	▲	▲	▲
	1,400	1.35	970	990	▲	▲	▲	▲	▲	▲
	55"	1.77	2,140	2,180	▲	▲	▲	▲	▲	▲
STD ¹⁾	1,500	1.45	1,030	1,030	▲	▲	▲	▲	▲	■
	59"	1.90	2,270	2,270	▲	▲	▲	▲	▲	▲
	1,600	1.55	1,070	1,090	▲	▲	■	▲	▲	▲
	63"	2.03	2,360	2,400	▲	▲	▲	▲	▲	▲
	1,500	1.65	1,160	1,160	▲	■	▲	▲	■	■
	59"	2.16	2,560	2,560	▲	▲	▲	▲	▲	▲
	1,600	1.75	1,220	1,230	▲	▲	■	▲	▲	■
	63"	2.29	2,690	2,710	▲	▲	▲	▲	▲	▲
	with counterweight 5.1 t/11,240 lb									
	STD ¹⁾	1,250	1.15	810	830	▲	▲	▲	▲	▲
49"		1.50	1,790	1,830	▲	▲	▲	▲	▲	▲
1,250		1.25	890	910	▲	▲	▲	▲	▲	▲
49"		1.63	1,960	2,010	▲	▲	▲	▲	▲	▲
1,400		1.35	850	880	▲	▲	▲	▲	▲	▲
55"		1.77	1,870	1,940	▲	▲	▲	▲	▲	▲
1,500		1.45	910	910	▲	▲	▲	▲	▲	▲
59"		1.90	2,010	2,010	▲	▲	▲	▲	▲	▲
1,600		1.55	950	970	▲	▲	▲	▲	▲	■
63"		2.03	2,090	2,140	▲	▲	▲	▲	▲	▲
HD ²⁾	1,500	1.65	1,020	1,020	▲	▲	■	▲	▲	■
	59"	2.16	2,250	2,250	▲	▲	▲	▲	▲	▲
	1,600	1.75	1,060	1,080	▲	■	▲	▲	■	▲
	63"	2.29	2,340	2,380	▲	▲	▲	▲	▲	▲
	1,250	1.15	910	940	▲	▲	▲	▲	▲	▲
	49"	1.50	2,010	2,070	▲	▲	▲	▲	▲	▲
	1,250	1.25	1,010	1,030	▲	▲	▲	▲	▲	▲
	49"	1.63	2,230	2,270	▲	▲	▲	▲	▲	▲
	1,400	1.35	970	990	▲	▲	▲	▲	▲	▲
	55"	1.77	2,140	2,180	▲	▲	▲	▲	▲	▲

* Indicated loads are based on ISO 10567, at maximum reach, and may be swung 360° on firm and even ground

¹⁾ Standard bucket with teeth Z 40

²⁾ HD bucket with teeth Z 40

³⁾ Bucket for direct mounting

⁴⁾ Bucket for mounting to quick coupler

Other buckets available upon request

Max. material weight ▲ = ≤ 2.0 t/m³/3,400 lb/yd³, ■ = ≤ 1.8 t/m³/3,000 lb/yd³, ▲ = ≤ 1.65 t/m³/2,800 lb/yd³, ■ = ≤ 1.5 t/m³/2,500 lb/yd³, △ = ≤ 1.2 t/m³/2,000 lb/yd³, – = not authorized

Lift Capacities

with Mono Boom 6.00 m / 19'8", Counterweight 4.6 t / 10,140 lb and Track Pads 800 mm / 31"

Stick 2.50 m / 8'2"

Under-carriage	↕	3.0 m 10 ft		4.5 m 15 ft		6.0 m 20 ft		7.5 m 25 ft		9.0 m 30 ft		m ft in		
		↕	↕	↕	↕	↕	↕	↕	↕	↕	↕	↕	↕	
LC	7.5 m t					7.2	7.9*					7.1	7.7*	6.0
	25 ft lb					16,2	17,2*	19,5**				16,2	17,2*	19,5**
	6.0 m t					7.1	8.6*					5.4	7.5*	7.1
	20 ft lb					15,3	18,9*					12,0	16,5*	23,2**
	4.5 m t	17.5*	17.5*	10.6	11.7*	6.8	9.4*	4.9	7.0			4.6	6.6	7.8
	15 ft lb	37,1*	37,1*	22,9	25,1*	14,8	20,5*	10,5	15,1			10,2	14,7	25,6**
	3.0 m t			9.8	14.0*	6.5	9.7	4.7	6.9			4.2	6.1	8.1
	10 ft lb			21,1	30,1*	14,0	20,8	10,2	14,8			9,3	13,5	26,7**
	1.5 m t			9.2	14.8	6.2	9.3	4.6	6.7			4.1	5.9	8.1
	5 ft lb			19,9	31,7	13,4	20,1	9,9	14,4			9,0	13,1	26,8**
	0 m t			9.0	14.5	6.0	9.1	4.5	6.6			4.2	6.1	7.9
	0 ft lb			19,4	31,1	13,0	19,6	9,7	14,2			9,2	13,5	25,11**
	-1.5 m t	12.9*	12.9*	9.0	14.4*	6.0	9.1					4.6	6.8	7.3
	-5 ft lb	29,4*	29,4*	19,4	31,1	12,9	19,5					10,2	15,0	24,11**
	-3.0 m t	15.7*	15.7*	9.2	12.3*	6.1	9.2					5.6	8.4	6.4
-10 ft lb	34,1*	34,1*	19,8	26,7*	13,2	19,8					12,5	18,7	20,11**	
-4.5 m t	10.5*	10.5*	8.2*	8.2*							7.6*	7.6*	4.8	
-15 ft lb	22,2*	22,2*	17,2*	17,2*							16,5*	16,5*	15,6**	

Stick 3.00 m / 9'10"

Under-carriage	↕	3.0 m 10 ft		4.5 m 15 ft		6.0 m 20 ft		7.5 m 25 ft		9.0 m 30 ft		m ft in		
		↕	↕	↕	↕	↕	↕	↕	↕	↕	↕	↕	↕	
LC	7.5 m t					7.3	7.7*					6.1	6.3*	6.6
	25 ft lb					15,7	16,5*					13,9	14,0*	21,6**
	6.0 m t					7.2	8.0*	5.0	6.7*			4.8	6.1*	7.6
	20 ft lb					15,5	17,5*					10,8	13,5*	24,11**
	4.5 m t			10.7*	10.7*	6.9	8.9*	4.9	7.1			4.2	6.0	8.3
	15 ft lb			23,1*	23,1*	14,9	19,2*	10,5	15,2			9,3	13,4	27*
	3.0 m t			10.0	13.1*	6.5	9.7	4.7	6.9			3.9	5.6	8.6
	10 ft lb			21,5	28,3*	14,1	20,9	10,2	14,8			8,5	12,3	28,11**
	1.5 m t			9.3	14.9	6.2	9.3	4.5	6.7			3.7	5.5	8.6
	5 ft lb			20,0	31,9	13,4	20,1	9,8	14,4			8,2	12,0	28,2**
	0 m t		6.5*	6.5*	9.0	14.5	6.0	9.1	4.4	6.5		3.8	5.6	8.4
	0 ft lb		15,0*	15,0*	19,3	31,1	12,9	19,6	9,5	14,1		8,4	12,3	27,6**
	-1.5 m t	12.0*	12.0*	8.9	14.4	5.9	9.0	4.4	6.5			4.1	6.1	7.9
	-5 ft lb	27,2*	27,2*	19,2	30,9	12,7	19,3	9,5	14,0			9,1	13,5	25,8**
	-3.0 m t	17.5*	17.5*	9.0	13.1*	6.0	9.0					4.9	7.3	7.0
-10 ft lb	38,0*	38,0*	19,4	28,4*	12,9	19,5					10,9	16,2	22,10**	
-4.5 m t	12.9*	12.9*	9.3	9.9*							6.9	7.8*	5.6	
-15 ft lb	27,5*	27,5*	20,0	21,0*							15,5	17,0*	18*	

Stick 3.50 m / 11'6"

Under-carriage	↕	3.0 m 10 ft		4.5 m 15 ft		6.0 m 20 ft		7.5 m 25 ft		9.0 m 30 ft		m ft in		
		↕	↕	↕	↕	↕	↕	↕	↕	↕	↕	↕	↕	
LC	7.5 m t											5.2*	5.2*	7.2
	25 ft lb											11,6*	11,6*	23,4**
	6.0 m t							5.1	6.6*			4.4	5.1*	8.1
	20 ft lb							10,9	13,9*			9,8	11,3*	26,6**
	4.5 m t					7.0	8.2*	4.9	7.1			3.9	5.2*	8.7
	15 ft lb					15,1	17,9*	10,6	15,3			8,5	11,4*	28,6**
	3.0 m t	12.9*	12.9*	10.1	12.2*	6.6	9.4*	4.7	6.9			3.6	5.2	9.0
	10 ft lb	33,7*	33,7*	21,9	26,3*	14,2	20,4*	10,2	14,8			7,9	11,4	29,6**
	1.5 m t	5.5*	5.5*	9.4	14.3*	6.2	9.4	4.5	6.7	3.5	5.1	3.4	5.0	9.0
	5 ft lb	12,9*	12,9*	20,2	30,9*	13,4	20,1	9,8	14,3			7,6	11,1	29,7**
	0 m t	7.6*	7.6*	8.9	14.5	5.9	9.1	4.4	6.5			3.5	5.2	8.8
	0 ft lb	17,3*	17,3*	19,2	31,0	12,8	19,5	9,4	14,0			7,7	11,4	28,11**
	-1.5 m t	11.5*	11.5*	8.8	14.3	5.8	8.9	4.3	6.4			3.8	5.6	8.3
	-5 ft lb	26,0*	26,0*	18,9	30,6	12,5	19,2	9,3	13,8			8,3	12,3	27,2**
	-3.0 m t	17.0*	17.0*	8.8	13.8*	5.8	8.9					4.3	6.5	7.5
-10 ft lb	37,7	38,5*	19,0	29,8*	12,6	19,2					9,6	14,4	24,6**	
-4.5 m t	14.9*	14.9*	9.1	11.1*	6.0	8.2*					5.7	7.8*	6.2	
-15 ft lb	32,0*	32,0*	19,5	23,8*	13,0	17,2*					12,9	17,1*	20,1**	

↕ Height ↕ Can be swayed through 360° ↕ In longitudinal position of undercarriage ↕ Max. reach * Limited by hydr. capacity

The load values are quoted in tons (t) / lb x 1,000 at stick end (without bucket), and may be swung 360° on firm and even ground. Adjacent values are valid for the undercarriage when in the longitudinal position. Capacities are valid for 800 mm / 31" wide track pads. Indicated loads are based on ISO 10567 standard and do not exceed 75% of tipping or 87% of hydraulic capacity (indicated via *). Without bucket cylinder, link and lever the lift capacities will increase by 345 kg / 760 lb. Lifting capacity of the excavator is limited by machine stability and hydraulic capacity.

Determine maximum load lift from load lift chart displayed in the operator's cab or from load lift chart detailed in the operator's manual supplied with the machine.

Lift Capacities

with Mono Boom 6.00 m/19'8", Counterweight 5.1 t/11,240 lb and Track Pads 800 mm/31"

Stick 2.50 m/8'2"

Under-carriage	Height	3.0 m 10 ft		4.5 m 15 ft		6.0 m 20 ft		7.5 m 25 ft		9.0 m 30 ft		m ft in		
		Can be stewed through 360°	In longitudinal position of undercarriage	Can be stewed through 360°	In longitudinal position of undercarriage	Can be stewed through 360°	In longitudinal position of undercarriage	Can be stewed through 360°	In longitudinal position of undercarriage	Can be stewed through 360°	In longitudinal position of undercarriage			
LC	7.5 m t					7.5	7.9*					7.4	7.7*	6.0
	25 ft lb					16,9	17,2*	19,5**				16,9	17,2*	19,5**
	6.0 m t					7.5	8.6*					5.7	7.5*	7.1
	20 ft lb					16,1	18,9*					12,6	16,5*	23,2**
	4.5 m t	17.5*	17.5*	11.1	11.7*	7.2	9.4*	5.1	7.3			4.8	6.9	7.8
	15 ft lb	37,1*	37,1*	24,0	25,1*	15,5	20,5*	11,0	15,8			10,7	15,3	25,6**
	3.0 m t			10.3	14.0*	6.8	10.1	5.0	7.2			4.4	6.4	8.1
	10 ft lb			22,2	30,1*	14,8	21,7	10,7	15,5			9,8	14,1	26,7**
	1.5 m t			9.7	15.4*	6.5	9.8	4.8	7.0			4.3	6.2	8.1
	5 ft lb			21,0	33,2*	14,1	21,0	10,4	15,1			9,5	13,7	26,8**
	0 m t			9.5	15.2	6.4	9.6	4.7	6.9			4.4	6.4	7.9
	0 ft lb			20,5	32,6	13,8	20,6	10,2	14,9			9,8	14,2	25,11**
	-1.5 m t	12.9*	12.9*	9.5	14.4*	6.3	9.5					4.9	7.1	7.3
	-5 ft lb	29,4*	29,4*	20,5	31,3*	13,7	20,5					10,8	15,7	24,1**
	-3.0 m t	15.7*	15.7*	9.7	12.3*	6.4	9.3*					5.9	8.5*	6.4
	-10 ft lb	34,1*	34,1*	20,8	26,7*	13,9	20,0*					13,2	18,8*	20,11**
-4.5 m t	10.5*	10.5*	8.2*	8.2*							7.6*	7.6*	4.8	
-15 ft lb	22,2*	22,2*	17,2*	17,2*							16,5*	16,5*	15,6**	

Stick 3.00 m/9'10"

Under-carriage	Height	3.0 m 10 ft		4.5 m 15 ft		6.0 m 20 ft		7.5 m 25 ft		9.0 m 30 ft		m ft in		
		Can be stewed through 360°	In longitudinal position of undercarriage	Can be stewed through 360°	In longitudinal position of undercarriage	Can be stewed through 360°	In longitudinal position of undercarriage	Can be stewed through 360°	In longitudinal position of undercarriage	Can be stewed through 360°	In longitudinal position of undercarriage			
LC	7.5 m t					7.7	7.7*					6.3*	6.3*	6.6
	25 ft lb					16,4	16,5*					14,0*	14,0*	21,6**
	6.0 m t					7.5	8.0*	5.3	6.7*			5.1	6.1*	7.6
	20 ft lb					16,2	17,5*					11,3	13,5*	24,11**
	4.5 m t			10.7*	10.7*	7.3	8.9*	5.2	7.4			4.4	6.2*	8.3
	15 ft lb			23,1*	23,1*	15,6	19,2*	11,1	15,9			9,8	13,6*	27*
	3.0 m t			10.5	13.1*	6.9	10.0*	5.0	7.2			4.1	5.9	8.6
	10 ft lb			22,6	28,3*	14,9	21,6*	10,7	15,5			9,0	12,9	28,1**
	1.5 m t			9.8	14.9*	6.5	9.8	4.8	7.0			4.0	5.7	8.6
	5 ft lb			21,1	32,3*	14,1	21,0	10,4	15,1			8,7	12,6	28,2**
	0 m t	6.5*	6.5*	9.5	15.2	6.3	9.5	4.7	6.9			4.0	5.9	8.4
	0 ft lb	15,0*	15,0*	20,4	32,5	13,7	20,5	10,1	14,8			8,9	12,9	27,6**
	-1.5 m t	12.0*	12.0*	9.4	14.8*	6.2	9.4	4.6	6.8			4.4	6.4	7.9
	-5 ft lb	27,2*	27,2*	20,2	32,1*	13,5	20,3	10,0	14,7			9,7	14,1	25,8**
	-3.0 m t	17.5*	17.5*	9.5	13.1*	6.3	9.5					5.2	7.6	7.0
	-10 ft lb	38,0*	38,0*	20,5	28,4*	13,6	20,4					11,5	17,0	22,10**
-4.5 m t	12.9*	12.9*	9.8	9.9*							7.2	7.8*	5.6	
-15 ft lb	27,5*	27,5*	21,0*	21,0*							16,3	17,0*	18*	

Stick 3.50 m/11'6"

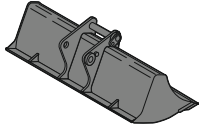
Under-carriage	Height	3.0 m 10 ft		4.5 m 15 ft		6.0 m 20 ft		7.5 m 25 ft		9.0 m 30 ft		m ft in		
		Can be stewed through 360°	In longitudinal position of undercarriage	Can be stewed through 360°	In longitudinal position of undercarriage	Can be stewed through 360°	In longitudinal position of undercarriage	Can be stewed through 360°	In longitudinal position of undercarriage	Can be stewed through 360°	In longitudinal position of undercarriage			
LC	7.5 m t											5.2*	5.2*	7.2
	25 ft lb											11,6*	11,6*	23,4**
	6.0 m t							5.3	6.6*			4.6	5.1*	8.1
	20 ft lb							11,4	13,9*			10,3	11,3*	26,6**
	4.5 m t					7.3	8.2*	5.2	7.4			4.1	5.2*	8.7
	15 ft lb					15,8	17,9*	11,1	15,9			9,0	11,4*	28,6**
	3.0 m t	12.9*	12.9*	10.6	12.2*	6.9	9.4*	5.0	7.2			3.8	5.4*	9.0
	10 ft lb	33,7*	33,7*	23,0	26,3*	15,0	20,4*	10,7	15,5			8,3	11,9*	29,6**
	1.5 m t	5.5*	5.5*	9.9	14.3*	6.6	9.8	4.8	7.0	3.7	5.3	3.7	5.3	9.0
	5 ft lb	12,9*	12,9*	21,3	30,9*	14,1	21,1	10,3	15,0			8,1	11,7	29,7**
	0 m t	7.6*	7.6*	9.4	15.1	6.3	9.5	4.6	6.8			3.7	5.4	8.8
	0 ft lb	17,3*	17,3*	20,3	32,5	13,6	20,4	10,0	14,7			8,2	11,9	28,11**
	-1.5 m t	11.5*	11.5*	9.3	15.0	6.2	9.3	4.6	6.7			4.0	5.8	8.3
	-5 ft lb	26,0*	26,0*	20,0	32,1	13,3	20,1	9,8	14,5			8,8	12,9	27,2**
	-3.0 m t	17.0*	17.0*	9.3	13.8*	6.2	9.3					4.6	6.8	7.5
	-10 ft lb	38,5*	38,5*	20,1	29,8*	13,3	20,1					10,2	15,1	24,6**
-4.5 m t	14.9*	14.9*	9.6	11.1*	6.3	8.2*					6.1	7.8*	6.2	
-15 ft lb	32,0*	32,0*	20,6	23,8*	13,7	17,2*					13,6	17,1*	20,1**	

Height
 Can be stewed through 360°
 In longitudinal position of undercarriage
 Max. reach
 * Limited by hydr. capacity

The load values are quoted in tons (t)/lb x 1,000 at stick end (without bucket), and may be swung 360° on firm and even ground. Adjacent values are valid for the undercarriage when in the longitudinal position. Capacities are valid for 800 mm/31" wide track pads. Indicated loads are based on ISO 10567 standard and do not exceed 75% of tipping or 87% of hydraulic capacity (indicated via *). Without bucket cylinder, link and lever the lift capacities will increase by 345 kg/760 lb. Lifting capacity of the excavator is limited by machine stability and hydraulic capacity.

Determine maximum load lift from load lift chart displayed in the operator's cab or from load lift chart detailed in the operator's manual supplied with the machine.

Available Attachments



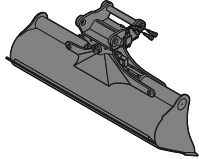
Rigid Ditch Cleaning Bucket

GRL 90, for direct mounting

Cutting width	mm/in	1,500/59"	2,000/79"	2,010/79"	2,400/95"				
Capacity	m ³ /yd ³	0.50/0.65	0.70/0.92	0.85/1.11	0.85/1.11				
Weight	kg/lb	400/880	500/1,100	530/1,170	580/1,280				

GRL 90, for mounting to quick coupler SWA 48

Cutting width	mm/in	1,500/59"	1,500/59"	2,000/79"	2,000/79"	2,000/79"	2,000/79"	2,400/95"	2,400/95"
Capacity	m ³ /yd ³	0.50/0.65	0.95/1.24	0.70/0.92	1.20/1.57	1.25/1.63	0.85/1.11	1.15/1.50	1.15/1.50
Weight	kg/lb	430/950	560/1,240	400/880	640/1,410	600/1,320	600/1,320	650/1,430	650/1,430



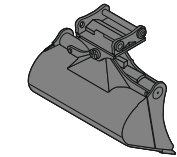
Tilttable Ditch Cleaning Bucket

GRL 90, 2 x 50° tilttable, for direct mounting

Cutting width	mm/in	1,600/63"	2,000/79"	2,000/79"	2,000/79"	2,200/87"	2,400/95"	2,800/110"		
Capacity	m ³ /yd ³	0.80/1.05	0.50/0.65	0.70/0.92	1.00/1.31	1.15/1.50	0.85/1.11	1.45/1.90		
Weight	kg/lb	798/1,760	686/1,510	819/1,810	883/1,950	920/2,030	885/1,950	1,009/2,220		

GRL 90, 2 x 50° tilttable, for mounting to quick coupler SWA 48

Cutting width	mm/in	1,600/63"	2,000/79"	2,000/79"	2,000/79"	2,200/87"	2,200/87"	2,200/87"	2,400/95"	2,400/95"	2,800/110"
Capacity	m ³ /yd ³	0.80/1.05	0.50/0.65	0.70/0.92	1.00/1.31	0.80/1.05	1.15/1.50	1.40/1.83	0.85/1.11	1.25/1.63	1.85/2.42
Weight	kg/lb	850/1,870	690/1,520	880/1,940	940/2,070	880/1,940	980/2,160	1,000/2,210	890/1,960	1,000/2,210	1,088/2,400



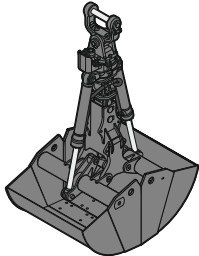
Tilt Bucket

SL 90, 2 x 50° tilttable, for direct mounting

Cutting width	mm/in	1,600/63"	1,600/63"	1,600/63"					
Capacity	m ³ /yd ³	0.80/1.05	1.00/1.31	1.35/1.77					
Weight	kg/lb	768/1,690	820/1,810	918/2,020					

SL 90, 2 x 50° tilttable, for mounting to quick coupler SWA 48

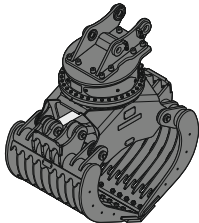
Cutting width	mm/in	1,500/59"	1,500/59"	1,600/63"	1,600/63"	1,600/63"	1,600/63"	1,600/63"	1,600/63"	1,600/63"
Capacity	m ³ /yd ³	0.60/0.78	1.20/1.57	0.80/1.05	1.00/1.31	1.35/1.77	1.55/2.03	1.00/1.31	1.35/1.77	1.55/2.03
Weight	kg/lb	680/1,500	970/2,140	820/1,810	890/1,960	970/2,140	1,035/2,280	1,006/2,220	1,184/2,610	1,550/3,420
HD-version								X	X	X



Clamshells

GM 20C, earthmoving shell, for mounting to quick coupler SWA 48 (exists for direct mounting)

Cutting width	mm/in	600/24"		800/31"		1,000/39"		1,200/47"	
Capacity	m ³ /yd ³	0.45/0.59		0.60/0.78		0.75/0.98		0.90/1.18	
Weight	kg/lb	1,080/2,380		1,130/2,490		1,205/2,660		1,270/2,800	



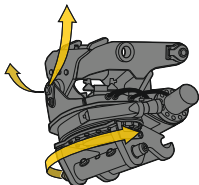
Sorting Grab

SG 30, for direct mounting

Cutting width	mm/in	1,000/39"	1,200/47"	1,400/55"	1,000/39"	1,200/47"	1,400/55"	1,000/39"	1,200/47"	1,400/55"	1,020/40"
Capacity	m ³ /yd ³	0.85/1.11	1.00/1.31	1.15/1.50	0.75/0.98	0.90/1.18	1.05/1.37	0.85/1.11	1.00/1.31	1.15/1.50	0.85/1.11
Weight	kg/lb	1,700/3,750	1,570/3,460	1,850/4,080	1,775/3,910	1,885/4,160	1,990/4,390	1,730/3,810	1,810/3,990	1,890/4,170	1,765/3,890

SG 30, for mounting to quick coupler SWA 48

Cutting width	mm/in	1,000/39"	1,200/47"	1,400/55"	1,000/39"	1,200/47"	1,400/55"	1,000/39"	1,200/47"	1,400/55"	1,020/40"
Capacity	m ³ /yd ³	0.85/1.11	1.00/1.31	1.15/1.50	0.75/0.98	0.90/1.18	1.05/1.37	0.85/1.11	1.00/1.31	1.15/1.50	0.85/1.11
Weight	kg/lb	1,700/3,750	1,570/3,460	1,850/4,080	1,775/3,910	1,885/4,160	1,990/4,390	1,730/3,810	1,810/3,990	1,890/4,170	1,765/3,890



Tiltrotator

LH-TR 25, for mounting to quick coupler SWA 48

Weight	kg/lb	720/1,590
Rotation		360°
Tilt		2 x 50°

Serial Equipment

Undercarriage

- Lashing eyes
- Sprocket with dirt ejector
- Track and carrier rollers, sealed and lifetime-lubricated

Uppercarriage

- Access platforms without protruding parts
- Anti-skid surfaces
- Automatic swing brake lock
- DEF tank filling indicator
- DEF tank lockable access hatch
- Engine coolant level, visible from the cab
- Engine hood with gas spring opening
- Filters accessible from ground level
- Handrails
- Hydraulic oil level, visible from ground level
- Lockable fuel tank cap
- Lockable service doors
- Lockable storage and accessories compartment
- Lockable storage box
- Main switch, accessible from ground level
- Main switch, electric, with timer
- Main switch, manual, lockable
- Positioning swing brake manual
- Protection grid on radiator fan
- Safe uppercarriage side access platform
- Sound insulation
- Swing drive gearbox oil level, visible from the cab
- Swing-out radiators
- Windshield washer fluid tank, accessible from ground level

Hydraulic System

- Dedicated swing circuit
- Filter with integrated fine filters
- Hydraulic pressure measuring ports
- Liebherr Positive Control system with 2 independent circuits
- Magnetic rod
- Pressure accumulator for controlled lowering of equipment with engine turned off

Engine

- Air filter with automatic dust ejector
- Automatic engine idling /speed increase, controlled via joystick sensors
- Common-Rail injection system
- Engine oil dipstick
- Exhaust gas after-treatment system – SCR
- Fixed geometry turbocharger
- Fuel fine filter
- Fuel pre-filter and water separator
- Fuel priming pump
- Intercooler
- Power Pack US EPA Tier 4 Final

Operator's Cab

- 7" multifunction color touchscreen
- Air conditioning, automatic, tri-zone, controlled via display
- Armrests adjustable in width, height and inclination
- Bottle holder
- Cab air filters housing, accessible from ground level
- Cab door sliding windows
- Cigarette lighter
- Coat hook
- DEF consumption on touchscreen
- DEF level on touchscreen
- Electric socket in cabin (12 V)
- Electric socket in cabin (24 V)
- Emergency hammer
- Engine oil level on touchscreen
- Fuel consumption on touchscreen
- Fuel level on touchscreen
- Hydraulic oil level on touchscreen
- Interior lighting
- Laminated right hand side window
- LIDAT Plus (Liebherr data transfer system)*
- Mechanical hour meters, visible from ground level
- Mobile phone storage net
- Movement priority between swing and boom, adjustable via touchscreen
- Movement priority for stick-in, adjustable via touchscreen
- Operating modes
- Power modes
- Rain hood over front window opening
- Rearview mirror
- Rear view monitoring camera
- Rear window emergency exit
- Right hand side view monitoring camera
- Roll-down sun blinds for windscreen and roof window
- ROPS safety cab structure (ISO 12117-2)
- Rubber floor mat, fixed on floor and removable
- Shortcut button on joystick configurable
- Stepless adjustable engine speed
- Storage box
- Storage nets
- Storage spaces
- Swing braking torque adjustable via touchscreen
- Tilttable console left
- Tinted windows
- Visco-elastic damping
- Windscreen wiper and washer

Equipment

- Anti-drift system boom cylinders
- Anti-drift system stick cylinder
- Boom cylinders regeneration
- Pivot points made of cast steel
- SAE split flanges on high pressure lines
- Stick cylinder regeneration

* optionally extendable after one year

Equipment Standard/Option

Undercarriage

Chain guide 1 piece	•
Chain guide 2 pieces	+
Chain guide 3 pieces	+
Cover and base plate for undercarriage center section	•
Reinforced cover and base plate for undercarriage center section	+
Special painting	+
Steps	•
Steps wide	+
Track pads triple grouser 600 mm / 24" / 700 mm / 28" / 900 mm / 35"	+
Track pads triple grouser 800 mm / 31"	•
Track pads triple grouser reinforced 600 mm / 24" / 700 mm / 28"	+
Tracks, sealed and greased	•
Tracks, sealed and greased, reinforced	+
Undercarriage LC	•
Undercarriage storage compartment (LC undercarriage)	+

Upper-carriage

Air pre-filter with cyclonical dust trap	+
Boxing ring	+
Catwalk tiltable front left	+
Centralized lubrication system (automatic)	•
Centralized lubrication system (manual)	+
Counterweight heavy 5.1 t / 11,240 lb	+
Counterweight standard 4.6 t / 10,140 lb	•
Electric socket on uppercarriage (24 V)	+
Extended tool set including tool box	+
External starting aid (24 V)	+
Fuel anti-theft protection	+
Headlight on uppercarriage, front left, LED+, 1 piece, protection included	+1)
Headlight on uppercarriage, front right, LED, 1 piece, protection included	•1)
Headlight on uppercarriage, front right, LED+, 1 piece, protection included	+1)
Headlight on uppercarriage, lateral left, LED+, 1 piece	+1)
Headlight on uppercarriage, lateral right, LED+, 1 piece	+1)
Headlights on uppercarriage, rear, LED+, 2 pieces	+1)
Lighting for tank area	+1)
Lighting for uppercarriage access	+1)
Pre-heating system for fuel	+
Radiator fine mesh protection grid	+
Reflective warning stickers	+
Reversible fan drive	+
Rotating beacons on uppercarriage, rear, LED, 2 pieces	+
Skyview 360°	+
Special painting	+
Tank refilling pump fuel	+
Tool set including storage case	•
Uppercarriage bottom and side protection	+
Uppercarriage bottom closure sheets	•

Hydraulic System

Bypass filter for hydraulic oil	+
High pressure circuit bypass	+
High pressure circuit flow summation	+
High pressure circuit switchable on pedals or mini-joystick	+
High pressure circuit with Tool Control (20 attachment adjustments on display)	+
Leak oil line for attachment	+
Liebherr hydraulic oil	•
Liebherr hydraulic oil, adapted for extreme climate conditions	+
Liebherr hydraulic oil, biodegradable	+

Engine

Automatic engine shutdown after idling	+
Engine shut-down with overrun	+
Lighting for engine compartment	+1)



Operator's Cab

3" seat belt with retractor, orange color	•
4-points seat belt	+
Acoustic travel alarm deactivatable	+
Auxiliary heater programmable	+
Bottom windscreen wiper	+
Coming / Leaving Home	+ ¹⁾
Cool box (12 V)	+
Dark tinted windows	+
Electrically adjustable and heated outside rear-view mirrors	+
Electronic immobilizer	+
Emergency stop in cab	+
FOPS top guard	+
FOPS top guard flat	+
Filter for hydraulic hammer return flow	+
Fire extinguisher	+
First-aid box	+
Footrest	+
FGPS front guard	+
FGPS front guard tiltable	+
Handrests elevated for joysticks	+
Headlights on cab, front, LED, 2 pieces	• ¹⁾
Headlights on cab, front, LED+, 2 pieces	+ ¹⁾
Headlights on cab roof, front, LED+, 2 pieces	+ ¹⁾
Impact resistant one-piece windscreen	+
Impact resistant roof window	+
Integral protection guard	+
Laminated roof window	•
Lightbar on cabin	+
Lighting for cabin access	+ ¹⁾
Luminosity control (LED+ headlights)	+ ¹⁾
Medium pressure circuit	+
Mini-joysticks proportional	•
Movement restriction for boom	+
Movement restriction for stick	+
Operator seat Comfort	•
Operator seat Premium	+
Overload warning system	+
Preparation for machine guidance system	+
Preparation for tiltrotator	+
Preparation for weighing system	+
Radio Comfort	+
Radio pre-installation	•
Remote cab lock	+ ¹⁾
Retractable laminated two-piece windscreen	•
Roof sun shield	+
Roof window wiper	+
Rotating beacon on cabin, LED, 1 piece	+
Seat belt reminder	+
Smart Key	+
Special painting	+
Straight travel via mini-joystick	+
Sun visor	+
Switch between high pressure and bucket cylinder controls	+
Windscreen bottom protection grid	+



Equipment

Bucket cylinder rod protection	+
Centralized lubrication extended for connecting link	+
Floating boom	+
Headlight guard on boom, right	+
Headlight guards on boom, right and left	+
Headlight on boom, left, LED+, 1 piece	+ ¹⁾
Headlight on boom, right, LED, 1 piece	• ¹⁾
Headlight on boom, right, LED+, 1 piece	+ ¹⁾
Headlight on stick, bottom, LED+, 1 piece	+ ¹⁾
Hose protection for LIKUFIX	+
LIKUFIX electric signal plug	+
LIKUFIX for quick coupler SWA 48 hydraulic	+
Load holding valve for bucket cylinder	+
Lubrication hoses protection on stick	+
Mono boom 6.00 m / 19'8"	•
Pipe fracture safety valve for stick cylinder	+
Pipe fracture safety valves for boom cylinders	+
Quick coupler SWA 48 hydraulic	+
Quick coupler SWA 48 mechanical	+
Special painting	+
Stick 2.50 m / 8'2"	+
Stick 3.00 m / 9'10"	+
Stick 3.50 m / 11'6"	+
Stick bottom protection	+
Tool Management	+

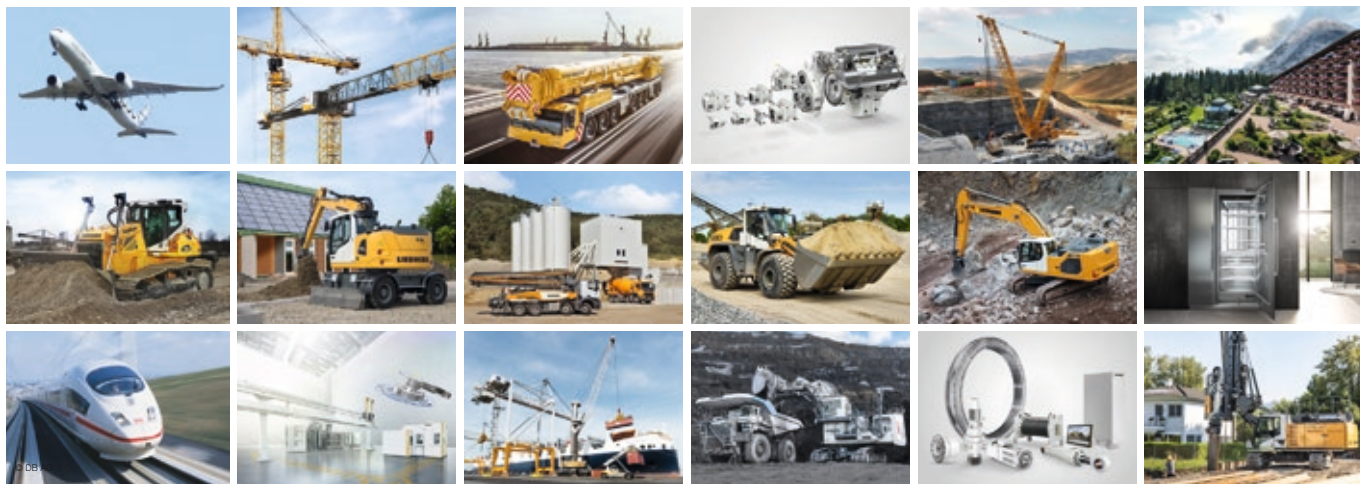
• = Standard, + = Option

¹⁾ Equipment not individually available, but only as predefined packages

Non-exhaustive list, please contact us for further information.

Options and/or special equipments, supplied by vendors other than Liebherr, are only to be installed with the knowledge and approval of Liebherr in order to retain warranty.

The Liebherr Group of Companies



Diverse Product Range

The Liebherr Group is one of the largest construction equipment manufacturers in the world. Liebherr's quality products and services hold a high reputation in many industries. The wide range includes domestic appliances, aerospace and transportation systems, machine tools and maritime cranes.

Exceptional Customer Benefit

Every product line provides a complete range of models in many different versions. With both their technical excellence and superior quality, Liebherr products offer customers the highest benefits in practical applications.

State-of-the-art Technology

Liebherr attributes great importance to the product areas of core technology and components, in order to achieve its consistent, top-quality products. Important modules and components are developed and manufactured in-house, for instance, the entire drive and control technology for the construction equipment and mining trucks.

Worldwide and Family-Owned

Hans Liebherr founded the Liebherr family company in 1949. Since that time, the enterprise has steadily grown to a group of more than 130 companies with more than 48,000 employees located on all continents. The corporate headquarters of the Group is Liebherr-International AG in Bulle, Switzerland. The Liebherr family is the sole owner of the company.

www.liebherr.us

WARNING

This product can expose you to chemicals including lead and lead compounds, which are known to the State of California to cause cancer and birth defects or other reproductive harm.
For more information go to www.P65warnings.ca.gov.

WARNING

Breathing diesel engine exhaust exposes you to chemicals known to the State of California to cause cancer and birth defects or other reproductive harm.

- ▶ Always start and operate the engine in a well-ventilated area.
- ▶ If in an enclosed area, vent the exhaust to the outside.
- ▶ Do not modify or tamper with exhaust system.
- ▶ Do not idle the engine except as necessary.

For more information go to www.P65warnings.ca.gov/diesel.